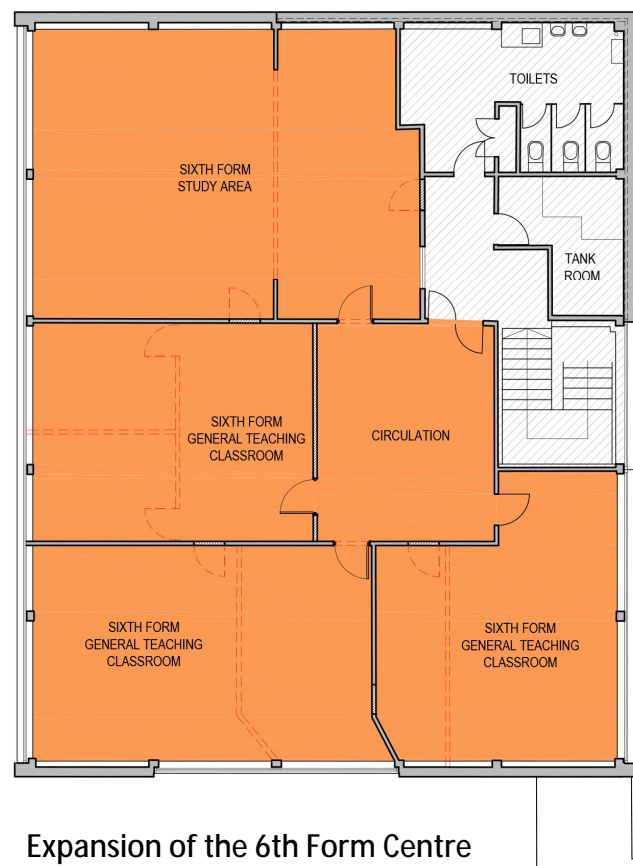


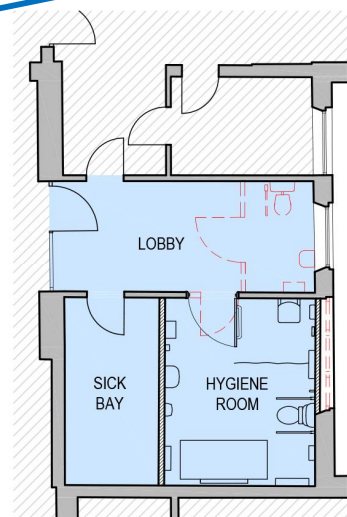
New Music Classroom & Store



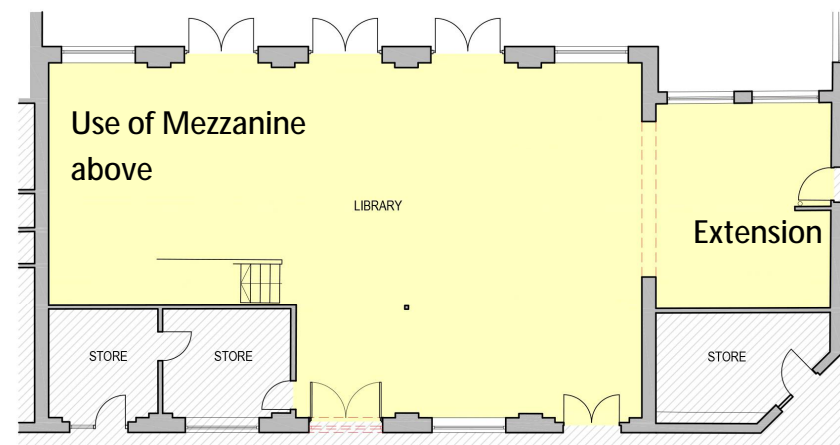
Alterations to the Craft Block



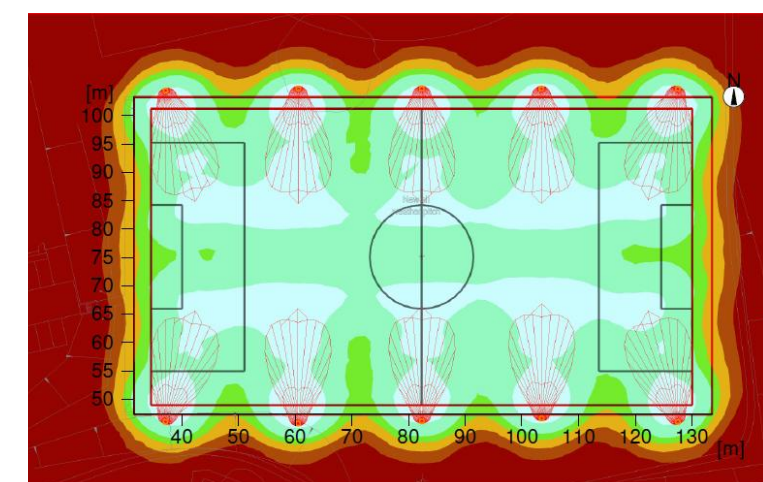
Expansion of the 6th Form Centre



Proposed Hygiene Room



Proposed Library



All Weather Pitch Lighting: It is proposed that the new All Weather Pitch will be flood lit to the Sports England Standards for School and Community use. The current design is based on 10 lighting poles each 12m high and by using modern LED lighting with shields it is possible to control the lighting to only the pitch area and eliminate light pollution up or out (see preliminary lighting plot above)

Library Extension: To accommodate the increased number of pupils it is necessary to increase the size of the Library. This will be achieved by knocking through into an adjacent office area and converting the existing mezzanine to library use.

New Hygiene Room: A new Hygiene room will be formed within the existing Sick Bay area providing an accessible toilet, shower and changing facilities.

6th Form Centre: Currently the ground floor of Block E accommodates the 6th Form Social Area and the first floor is used as the SEN facility. With the SEN being relocated into the New Building it is proposed to alter and refurbish the first floor of Block C to create a large 6th Form Study Area and dedicated 6th Form classrooms.

New Music Classroom: A section of the maintenance store (previously a changing room) will be altered and refurbished to form an additional music classroom adjacent to the Music Department.

Alterations to the Craft Block: To create the site for the New Building a large part of the existing Craft Block will need to be demolished. The facilities lost due to the demolition will be accommodated in the New Building. A large section of the remaining building will be altered and refurbished to accommodate an improved Design Technology Facility. The refurbishment will extend to the outside with new doors and windows being fitted to improve the thermal efficiency of the building.